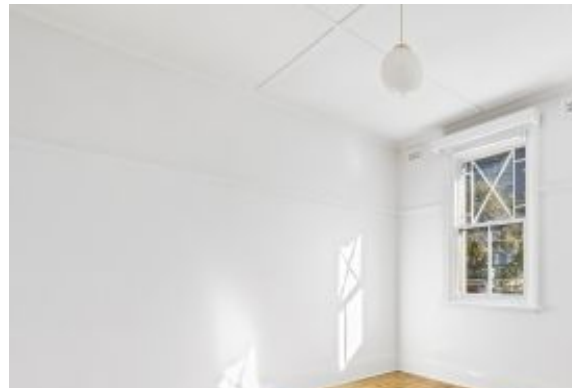


# WILLIAMS BATTERS



## Windsor, VIC Level 1/76 Punt

**0** BED **0** BATH **0** CAR

- Popular location close to the St Kilda Junction
- 1st floor with abundance of natural light
- 1 Onsite carpark
- Walking distance to public transport

Area of 126m2 approx. consisting of small and larger rooms ,

This iconic Punt Road position makes for a truly great value for a range of commercial businesses.

**Council Rates:** \$0/qtr (approx)

**Water Rates:** \$0/qtr (approx)

**Contact:** Bill Cook  
(03) 9866 4411  
0411 089 890  
Angela Nielsen  
(03) 9866 4411  
0477 997 977

**Type:** Offices

<https://www.williamsbatters.com.au>