

WILLIAMS BATTERS



Armadale, VIC 19 Morey Street



This outstanding shop is considered to be part of the most intact group of Edwardian shops in the City of Stonington
Positioned in Armadale, one of Melbourne's most affluent suburbs and located only metres from High Street's shops, tram and amenities.
This premises has a combined frontage of 6 shops, an area of approx 220m² and includes beautiful details of:

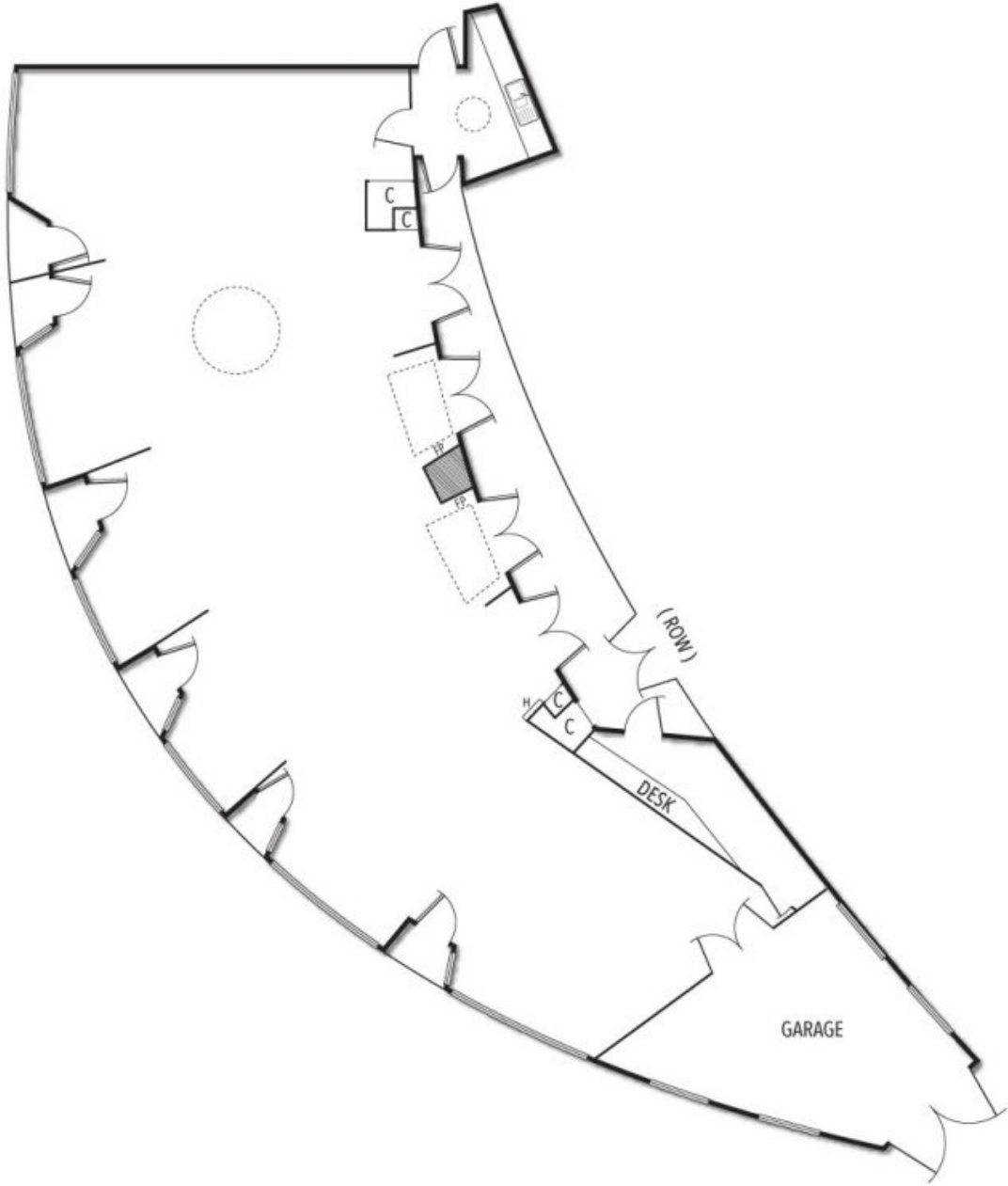
- Metal-framed windows
- Green tiled stallboards
- Recessed entry with tiled floor

Contact Agent

Contact: Commercial Department
03 9866 4411
0411 089 890

Type: Retail

<https://www.williamsbatters.com.au>



Plans shown are only indicative of layout. Dimensions are approximate.

WILLIAMS
BATTERS

Armadale, VIC
19 Morey Street

